

NOTICE TO MARINERS

Please be advised that Precision Marine Survey Limited are currently undertaking sub-tidal benthic survey work on behalf of Moray Offshore Windfarm (West) Limited (Moray West) within the Moray West wind farm site and indicative export cable route corridor. Figure 1 below provides details of the survey location.

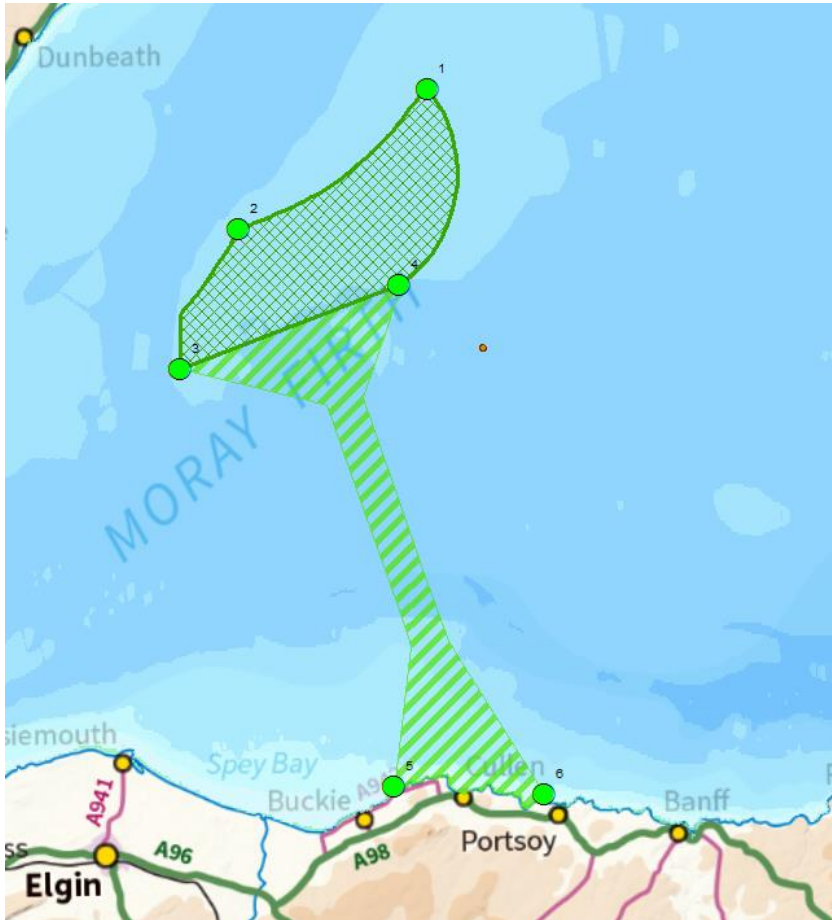


Figure 1: Location of the works

Latitude and longitude for the highlighted edge points are as follows:

Point	Latitude	Longitude
1	58.209520	-2.8741902
2	58.107197	-3.1357602
3	58.003955	-3.2164359
4	58.065759	-2.9132702
5	57.697741	-2.9211035
6	57.691765	-2.7153197

The survey involves a combination of survey techniques. Sampling will be undertaken using both a 0.1m² mini-hamon grab and 0.1m² day grab in order to characterise the benthic community and allow for particle size distribution and contaminant analysis. In addition, drop down video recording and a

series of beam trawls (2m) will be undertaken to further assess seabed habitats and characterise larger/mobile species. Ongoing surveys are expected to take a further 2-3 days to complete.

The vessel Precision 1 will undertake the work, details of which are outlined below. The vessel will be operating out of Buckie (See Figure 2 for image of this vessel).

Vessel	Company	Call Sign
Precision 1	Precision Marine Survey Ltd	2FCD2



Figure 2 – Survey Catamaran ‘Precision 1’

Contractor contact details

James Allen: j.h.allen@precisionmarine.co.uk, 01964 624423 (office) 07880726904 (mobile)

Vessel: precision1@precisionmarine.co.uk, 07710 306407.

Developer contact details

John Yorston (QHSSE Manager)

Address: 40 Princess Street, Edinburgh, EH2 2BY

Email: john.yorston@edpr.com

Tel: 0131 556 7602/ 07557 018980